

將軍
SHOGUN®

The hallmark of quality in Japanese carpentry woodworking tools.

PULL-265
PAN

鉋

NOKOGIRI

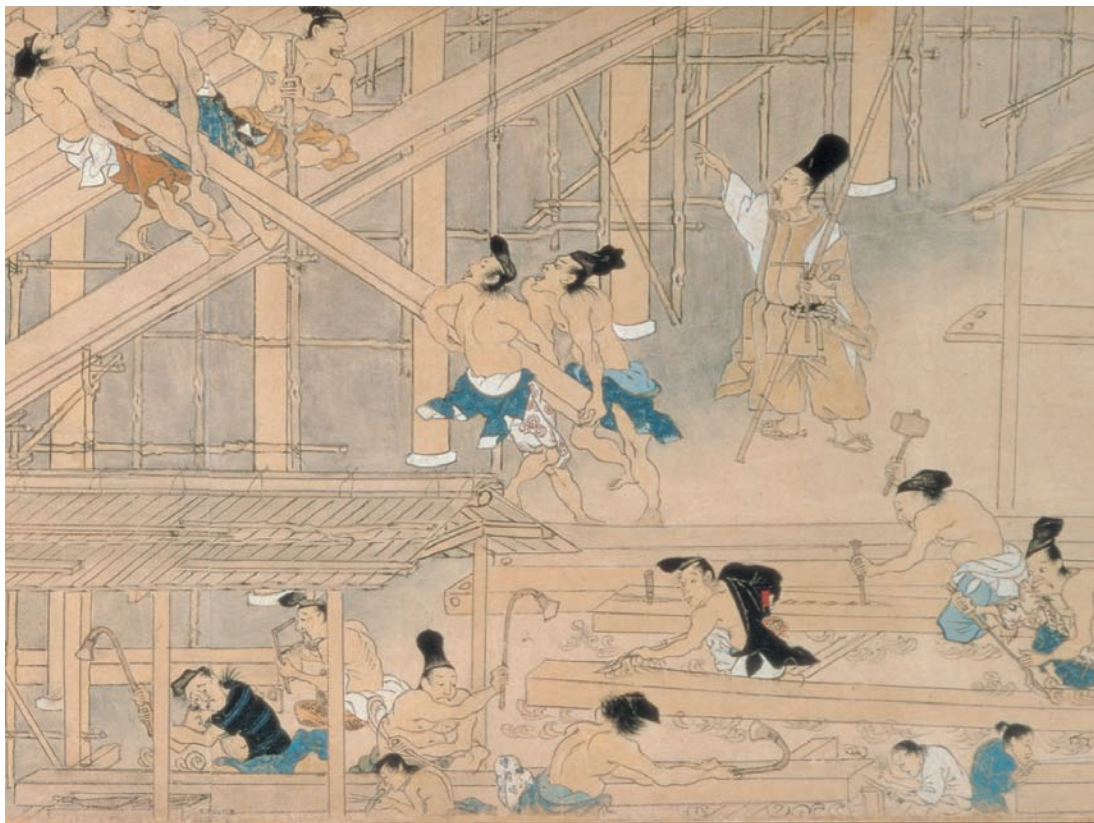
Product information **SHOGUN**



将軍 SHOGUN®

The hallmark of quality in Japanese carpentry woodworking tools.

Skilled Japanese craftsmanship develop traditional Japanese woodworking tools. SHOGUN pull saws provide a superior performance for cutting soft and hard wood, green wood, PVC pipe, even new materials such as plywood, masonite and laminate.



重要文化財「松崎天神縁起絵巻」 出典「山口県防府天満宮蔵」

WARNING:

- ※Always wear safety goggles or eye protection glasses and gloves when using saws.
- ※Do not use near live electrical circuits.
- ※Place the replacement blade securely in the blade holder.
- ※Make sure the replacement blade is securely attached to the blade holder.
- ※Do not catch fingers in the saw teeth.

SHOGUN fast cut pull saws are essential for anyone who appreciates fine woodworking tools.

SHOGUN pull stroke cut saws have a thinner blade, leaving a narrower kerf with no buckle or jump.

SHOGUN pull saws teeth are shaped in a chisel-like point to score the soft and hard wood to prevent tears.



Impulse hardened teeth



2-step deep teeth



Normal uniform deep teeth



Universal cut teeth

SHOGUN impulse hardened teeth provide a much longer life than conventional saw teeth, with a hardness of about Hv900-950.

Impulse hardened teeth retain the sharpness of the cutting edges 3 times longer than conventional saw teeth.

Fast cut pull saw with special 2-step deep teeth for scraping out wood chips to prevent clogging.

Fast cut pull saw with normal uniform deep teeth.

Fast cut pull saw with universal cut teeth (rip-, cross- and slant-cutting)

SHOGUN carpentry pull saws teeth are designed for rip-, cross- and slant-cutting in Extra-Fine, Super-Fine, Fine, Medium-Fine, Medium and Coarse.

Choosing a saw depends on the material on which the saw will be used and what is to be achieved.

RIP-CUT SAW (TATEBIKI-NOKO)

A saw used to cut timber in the same direction as the wood grain.

CROSS-CUT SAW (YOKOBIKI-NOKO)

A saw used to cut timber across the wood grain.

SLANT-CUT SAW (NANAMEBIKI-NOKO)

A saw used to cut tenon-shoulder in a slant.



Contents

Carpentry Saw Series

■ HOOK TYPE, CHANGEABLE BLADE FAST CUT PULL SAWS.	P.02
■ HOOK TYPE, CHANGEABLE BLADE MIGHTY PULL SAWS. PISTOL GRIP	P.03
■ HOOK TYPE, CHANGEABLE BLADE FAST CUT PULL SAWS. FOLDING TYPE HANDLE	P.04
■ HOOK TYPE, CHANGEABLE BLADE FAST CUT PULL SAWS. STRAIGHT HANDLE	P.05
■ DOZUKI SAWS. DOVETAIL SAWS.	P.06
■ RYOBA SAWS.	P.07
■ WALLBOARD SAWS.	P.07
■ JET-Series PULL SAWS.	P.08
■ UTILITY FOLDING MINI-SAWS.	P.09
■ FLUSH CUT SAWS.	P.09
■ CRAFT WORK SAWS.	P.10
■ MIGHTY RYOBA SAW.	P.11
■ MIGHTY POCKET SAWS.	P.11
■ FLUSH CUT SAWS.	P.12
■ HANDY SAWS.	P.12

Gardening Saw Series

■ MIGHTY PRUNING SAWS.	P.13
■ PRO-Series PRUNING SAWS.	P.13
■ MULTI-PURPOSE HANDY FOLDING SAWS.	P.14

Forestry Saw Series

■ FORESTRY & HORTICULTURE SAWS.	P.15
■ FORESTRY & HORTICULTURE SAWS.	P.16
■ TELESCOPIC POLE SAWS.	P.17
■ DELUXE FOLDING POCKET SAW.	P.17

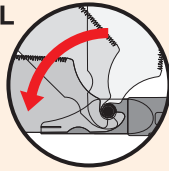


HOOK TYPE, CHANGEABLE BLADE FAST CUT PULL SAWS.

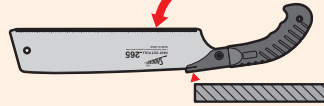
SHOGUN hook type, changeable blade saw is effective for quick and easy maintenance without difficult re-sharpening as with a conventional saw.
 SHOGUN hook type, changeable blade saw cuts on the pull stroke, which is a more natural and less tiring sawing operation, and has special 2-step deep teeth for scraping out wood chips to prevent logging.

CHANGING BLADE: PUT EDGE PROTECTOR ON WHEN CHANGING BLADE.

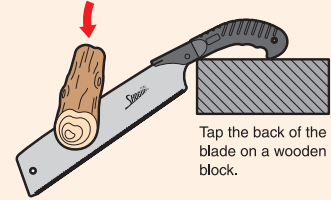
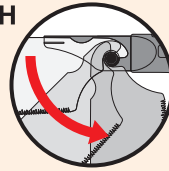
INSTALL



Insert and hook the new blade on the holding hook and tap the back of the blade holder.



DETACH



Tap the back of the blade on a wooden block.

PISTOL GRIP

SHOGUN pistol grip non-slip elastomer-plastic handle is comfortable and designed to achieve the most effective angle for powerful and smooth cutting.

PIS-Series PISTOL GRIPS.

"STANDARD" TYPE PISTOL GRIP:

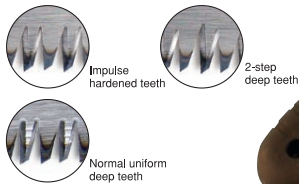


"DELUXE" TYPE PISTOL GRIP:



CROSS-CUT SAWS

Cross cut carpentry hand saws are must have saws for anyone who appreciates fine cross cutting timbers, composite boards, etc.



Item Nos.	Specifications:	Blade Length:	Blade Thickness:	Kerf:(±0.05mm)	Tooth Space(TPI)	Spare Blade Item Nos.
No.PIS-250	Normal uniform deep teeth, Fine teeth.	250mm	0.5mm	0.66mm	1.36mm(19TPI)	No.PIS/OK-250
No.PIS-265	2 steps deep teeth, Medium-Fine teeth.	265mm	0.6mm	0.90mm	1.75mm(16TPI)	No.PIS/OK-265
No.PIS-300	2 steps deep teeth, Coarse teeth.	300mm	0.7mm	1.07mm	2.15mm(13TPI)	No.PIS/OK-300

UNIVERSAL CUT SAWS

Universal rip, cross and slant cut carpentry saws are must have saws for anyone who appreciates fine universal rip, cross and slant cutting timbers, composite boards, etc.

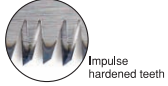


Item Nos.	Specifications:	Blade Length:	Blade Thickness:	Kerf:(±0.05mm)	Tooth Space(TPI)	Spare Blade Item Nos.
No.PIS-250RC	Universal Fine teeth.	250mm	0.5mm	0.66mm	1.36mm(19TPI)	No.PIS/OK-250RC
No.PIS-265RC	Universal Medium-Fine teeth.	265mm	0.6mm	0.90mm	1.75mm(16TPI)	No.PIS/OK-265RC
No.PIS-300RC	Universal Coarse teeth.	300mm	0.7mm	1.07mm	2.15mm(13TPI)	No.PIS/OK-300RC

HOOK TYPE, CHANGEABLE BLADE MIGHTY PULL SAWS. PISTOL GRIP

BAMBOO CUT SAW

Ideally set teeth for smooth cutting bamboo with less damage from the blade.



Impulse hardened teeth



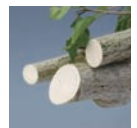
Item No.	Specifications:	Blade Length:	Blade Thickness:	Kerf:(±0.05mm)	Tooth Space(TPI)	Spare Blade Item No.
No.PIS-10	Mighty saw for bamboo cutting.	240mm	0.6mm	0.9mm	3.75mm(7TPI)	No.PIS/OK-10

GARDEN PRUNING SAW

Cuts everything from trees to firewood, but is the most suitable saw for cutting green wood.



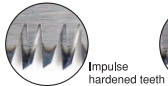
Impulse hardened teeth



Item No.	Specifications:	Blade Length:	Blade Thickness:	Kerf:(±0.05mm)	Tooth Space(TPI)	Spare Blade Item No.
No.PIS-20	Mighty pruning saw for green wood cutting.	240mm	0.9mm	1.4mm	3.75mm(7TPI)	No.PIS/OK-20

KARIWAKU & PRUNING SAW

Mighty pull saw for cutting frame-board, compiled wood, plywood, laminate, green wood and bamboo.



Impulse hardened teeth



2-step deep teeth



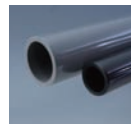
Item No.	Specifications:	Blade Length:	Blade Thickness:	Kerf:(±0.05mm)	Tooth Space(TPI)	Spare Blade Item No.
No.PIS-30	2-step deep teeth, non-electro nickel-plated finish blade.	270mm	0.9mm	1.4mm	2.72mm(9TPI)	No.PIS/OK-30

PVC PIPE CUT SAW

PVC pipe cutting saw is a must have saw for carpenters, electricians and engineers.



Impulse hardened teeth



Item No.	Specifications:	Blade Length:	Blade Thickness:	Kerf:(±0.05mm)	Tooth Space(TPI)	Spare Blade Item No.
No.PIS-60	Non-electro, nickel-plated finish blade.	250mm	0.6mm	0.9mm	1.5mm(17TPI)	No.PIS/OK-60

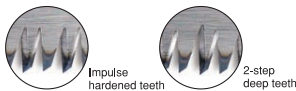


HOOK TYPE, CHANGEABLE BLADE FAST CUT PULL SAWS. FOLDING TYPE HANDLE

The SHOGUN folding saw is compact and convenient for carrying.
The blade angle can be adjusted to 2 angles.
Comfortable non-slip, elastomer-plastic, foldable handle.

FOLDING CROSS-CUT SAW

This cross-cut carpentry hand saw is a must have saw for anyone who appreciates fine cross-cutting on timbers and composite boards, etc.



AVAILABLE HANDLE COLORS
BLACK, RED, BLUE & GREY.



Item No.	Specifications:	Blade Length:	Blade Thickness:	Kerf:(±0.05mm)	Tooth Space(TPI)	Spare Blade Item No.
No.OK-265/FLD	2-step deep teeth, Medium-Fine teeth.	265mm	0.6mm	0.9mm	1.75mm(16TPI)	No.PIS/OK-265

FOLDING UNIVERSAL CUT SAW

This universal rip-, cross- and slant-cut carpentry hand saw is a must have saw for anyone who appreciates fine universal cutting on timbers, composite boards, etc.



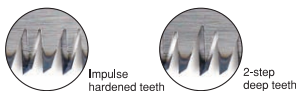
AVAILABLE HANDLE COLORS
BLACK, RED, BLUE & GREY.



Item No.	Specifications:	Blade Length:	Blade Thickness:	Kerf:(±0.05mm)	Tooth Space(TPI)	Spare Blade Item No.
No.OK-265RC/FLD	2-step deep teeth, Medium-Fine teeth.	265mm	0.6mm	0.9mm	1.75mm(16TPI)	No.PIS/OK-265RC

FOLDING KARIWAKU & PRUNING SAW

Mighty pull saw for cutting frame-board, compiled wood, plywood, laminate, green wood & bamboo.



AVAILABLE HANDLE COLORS
BLACK, RED, BLUE & GREY.



Item No.	Specifications:	Blade Length:	Blade Thickness:	Kerf:(±0.05mm)	Tooth Space(TPI)	Spare Blade Item No.
No.OK-30/FLD	2-step deep teeth, non-electro nickel-plated finish blade.	270mm	0.9mm	1.4mm	2.72mm(9TPI)	No.PIS/OK-30

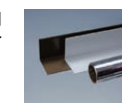
FOLDING DOZUKI SAW



※Mighty DOZUKI saw No.MP-15/FLD is compact and has Super-Fine toothing in combination with a very thin blade for accurate tenon-shoulder, dovetail and wood-joint cutting.



※Mighty DOZUKI saw No.MPS-15/FLD is compact and has Extra-Fine toothing with a very thin blade for cutting plastic and non-ferrous material.



Item Nos.	Specifications:	Blade Length:	Blade Thickness:	Kerf:(±0.05mm)	Tooth Space(TPI)	Spare Blade Item Nos.
No.MP-15/FLD	Super-Fine teeth, polished finish blade.	150mm	0.3mm	0.54mm	1.25mm(20TPI)	No.MP-15/FLD/SB
No.MPS-15/FLD	Extra-Fine teeth, polished finish blade.	150mm	0.3mm	0.40mm	0.83mm(31TPI)	No.MPS-15/FLD/SB

HOOK TYPE, CHANGEABLE BLADE FAST CUT PULL SAWS. STRAIGHT HANDLE

The SHOGUN straight handle saw is perfect for accurate tenon shoulder and dovetail cutting.

CROSS-CUT SAW

Complete with long wooden handle.



Impulse hardened teeth



2-step deep teeth



Item No.	Specifications:	Blade Length:	Blade Thickness:	Kerf:(±0.05mm)	Tooth Space(TPI)	Spare Blade Item No.
No.OK-265	2-step deep teeth, Medium-Fine teeth.	265mm	0.6mm	0.90mm	1.75mm(16TPI)	No.PIS/OK-265

CROSS-CUT SAW

Complete with long elastomer-plastic handle.



Impulse hardened teeth



2-step deep teeth



AVAILABLE HANDLE COLORS
BLACK, RED, BLUE & GREY.



Item No.	Specifications:	Blade Length:	Blade Thickness:	Kerf:(±0.05mm)	Tooth Space(TPI)	Spare Blade Item No.
No.OKR-265	2-step deep teeth, Medium-Fine teeth.	265mm	0.6mm	0.9mm	1.75mm(16TPI)	No.PIS/OK-265

UNIVERSAL CUT SAW

Universal rip-, cross- and slant-cut carpentry saw, with a long, wooden handle.



Impulse hardened teeth



Universal cut teeth



Item No.	Specifications:	Blade Length:	Blade Thickness:	Kerf:(±0.05mm)	Tooth Space(TPI)	Spare Blade Item No.
No.OK-265RC	Universal Medium-Fine teeth.	265mm	0.6mm	0.9mm	1.75mm(16TPI)	No.PIS/OK-265RC

UNIVERSAL CUT SAW

Universal rip-, cross- and slant-cut carpentry saw, with long, elastomer-plastic handle.



Impulse hardened teeth



Universal cut teeth



AVAILABLE HANDLE COLORS
BLACK, RED, BLUE & GREY.



Item No.	Specifications:	Blade Length:	Blade Thickness:	Kerf:(±0.05mm)	Tooth Space(TPI)	Spare Blade Item No.
No.OKR-265RC	Universal Medium-Fine teeth.	265mm	0.6mm	0.9mm	1.75mm(16TPI)	No.PIS/OK-265RC

PANEL SAW

Compact size DOZUKI saw (Panel Saw) for dovetailing, cross-cutting and general cabinet making.

Steel back for better rigidity, fine toothing and a thin blade give accurate tenon shoulder, dovetail and wood-joint cutting and a perfect surface.



Impulse hardened teeth



Normal uniform deep teeth



Item No.	Specifications:	Blade Length:	Blade Thickness:	Kerf:(±0.05mm)	Tooth Space(TPI)	Spare Blade Item No.
No.MP-150	Changeable blade type, Fine teeth.	150mm	0.3mm	0.5mm	1.4mm(18TPI)	No.MP150/SB



DOZUKI SAWS. DOVETAIL SAWS.

The SHOGUN heavy steel back saw is strong and with Super-Fine toothing on a very thin blade gives accurate tenon shoulder, dovetail and wood-joint cutting and a perfect surface. Light, smooth pull strokes give the best results. The straight wooden handle is more suitable for accurate, straight cutting.

CHANGEABLE BLADE TYPE MINI- DOZUKI SAW

Excellent for cutting moldings and making clean, splinter-free cuts in cabinetry and furniture-making. Non-electro nickel-plated finish blade for rust prevention.

OVERALL LENGTH: 410mm.



Item No.	Specifications:	Blade Length:	Blade Thickness:	Kerf:(±0.05mm)	Tooth Space	Spare Blade Item No.
No.MC-19	Super-Fine teeth, SK-4 steel blade.	190mm	0.3mm	0.4mm	1mm	No.MC-19/SB

FIX BLADE TYPE SUPER-FINE TEETH DOZUKI SAW

Classic model with full steel back for better rigidity, wherever precise thin-kerf cuts are required.



Item Nos.	Specifications:	Blade Length:	Blade Thickness:	Kerf:(±0.05mm)	Tooth Space	Spare Blade Item Nos.
No.MCD-150	Fix blade type, Super-Fine teeth, Cross-cutting.	150mm	0.3mm	0.4mm	1mm	Nil
No.MCD-210	Fix blade type, Super-Fine teeth, Cross-cutting.	210mm	0.3mm	0.4mm	1mm	Nil
No.MCD-240	Fix blade type, Super-Fine teeth, Cross-cutting.	240mm	0.3mm	0.4mm	1mm	Nil

CHANGEABLE BLADE TYPE STANDARD DOZUKI SAW

The most popular model for precise cuts in furniture making, craft work and detail work.



Item No.	Specifications:	Blade Length:	Blade Thickness:	Kerf:(±0.05mm)	Tooth Space(TPI)	Spare Blade Item No.
No.MC-24	Super-Fine teeth, Cross-cutting, polished finish.	240mm	0.3mm	0.45mm	1mm(20TPI)	No.MC-24/SB
No.MC-24H	Same as No.MC-24, but Impulse hardened edge.	240mm	0.3mm	0.45mm	1mm(20TPI)	No.MC-24H/SB

CHANGEABLE BLADE TYPE UNIVERSAL DOZUKI SAW

Universal teeth for rip- and cross-cutting. This model is more suitable for dovetail and wood-joint cutting.



Item No.	Specifications:	Blade Length:	Blade Thickness:	Kerf:(±0.05mm)	Tooth Space(TPI)	Spare Blade Item No.
No.MCRC-24	Super-Fine teeth, Universal rip- and cross-cutting.	240mm	0.3mm	0.4mm	1mm(20TPI)	No.MCRC-24/SB
No.MCRC-24H	Same as No.MCRC-24, but Impulse hardened edge.	240mm	0.3mm	0.4mm	1mm(20TPI)	No.MCRC-24H/SB

CHANGEABLE WIDE BLADE TYPE CROSS CUTTING DOZUKI SAW

This wide blade model cuts slightly larger diameter or thicker wood. Impulse hardened teeth edge.



Item No.	Specifications:	Blade Length:	Blade Thickness:	Kerf:(±0.05mm)	Tooth Space(TPI)	Spare Blade Item No.
No.MCW-24H	Super-Fine teeth, Cross-cutting, polished finish.	250mm	0.25mm	0.38mm	1.07mm(24TPI)	No.MCW-24H/SB

RYOBA SAWS.

SHOGUN changeable blade Ryoba saw has one edge for cross-cutting and another for rip-cutting.

RYOBA SAW:Double-Edge Saw

Classic model rip- and cross-cut saw.
Non-electro nickel-plated finish blade for rust prevention.



Item No.	Specifications:	Blade Length:	Blade Thickness:	Kerf:(±0.05mm)	Tooth Space(TPI)	Spare Blade Item No.
No.MCDX-24	Medium-Fine & Coarse teeth, SK-4 steel blade.	240mm	0.5mm	0.8mm	1.5+5mm(7+18TPI)	No.MCDX-24/SB

RYOBA SAW:Double-Edge Saw

Rip- and cross-cut saw, with straight, long wooden handle.



Impulse
hardened teeth



Item No.	Specifications:	Blade Length:	Blade Thickness:	Kerf:(±0.05mm)	Tooth Space(TPI)	Spare Blade Item No.
No.MC-2424H	Medium-Fine & Coarse teeth.	240mm	0.6mm	0.8mm	2.2&5mm(10&16TPI)	No.MC-2424H/SB

WALLBOARD SAWS.

SHOGUN Wallboard Saws for push stroke to cut electrical boxes, water line holes in wallboard, masonite, plywood, plaster-board, etc.

DRY WALLBOARD SAW

Extremely stiff and sharp point blade for easy board penetration. Impulse hardened and chrome-plated blade.
Comfortable non-slip elastomer-plastic handle with handy strap.



Impulse
hardened teeth



No.J-160KS/SHEATH



Item Nos.	Specifications:	Blade Length:	Blade Thickness:	Kerf:(±0.05mm)	Tooth Space(TPI)
No.J-160KS	Dry Wallboard Saw for PUSH stroke.	160mm	1.8mm	2.2mm	3.75mm(7TPI)
J-160KS/SHEATH:	Man-made leather sheath for Wallboard Saw No.J-160KS.				

WALLBOARD SAW

Self-drilling point for easy board penetration without pilot hole.
Chemically black finish blade with moulded plastic handle.



Item Nos.	Specifications:	Blade Length:	Blade Thickness:	Kerf:(±0.05mm)	Tooth Space(TPI)	Spare Blade Item Nos.
No.420-S	Wallboard Saw for PUSH stroke.	150mm	1.6mm	2.0mm	3.0mm(10TPI)	420-S/SB
No.420-L	Wallboard Saw for PUSH stroke.	250mm	1.6mm	2.0mm	3.0mm(10TPI)	420-L/SB

BARREL-SHAPE BLADE UTILITY SAW

Barrel-shaped blade effectively makes holes in plywood and wood for electrical boxes, etc.



Item Nos.	Specifications:	Blade Length:	Blade Thickness:	Kerf:(±0.05mm)	Tooth Space(TPI)
No.MBS-70	Barrel-shape blade utility saw for PULL stroke.	70 mm	0.55mm	0.7 mm	1.5mm

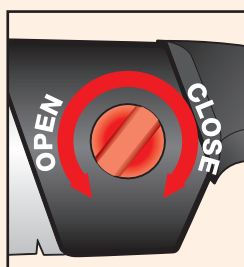


JET-Series PULL SAWS.

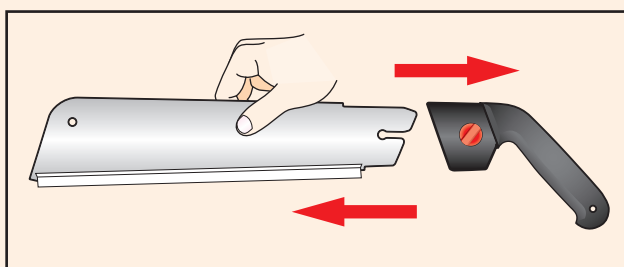
SHOGUN JET-series changeable blade saw is effective for quick and easy maintenance without difficult re-sharpening as with conventional saws. JET-series carpentry saws cut on the pull stroke and their blades feature diamond-ground teeth, resulting in extremely sharp blades, having special 2-step deep teeth for scraping out wood chips to prevent clogging. Comfortable non-slip elastomer-plastic handle. Impulse hardened teeth edge provide much longer life and retain their sharpness three times longer than conventional saw teeth.

CHANGING BLADE

- TURN PLASTIC KNOB
- CLOCK-WISE FOR AFFIXING.
- COUNTER CLOCK-WISE FOR LOOSENING.

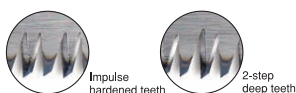


PUT EDGE PROTECTOR ON WHEN CHANGING BLADE



CARPENTRY HAND SAW

Framing and general carpentry hand saw is an all-around saw for professionals and do-it-yourselfers. Extra-thin blade cuts very quickly and smoothly.



Item Nos.	Specifications:	Blade Length:	Blade Thickness:	Kerf:(±0.05mm)	Tooth Space(TPI)	Spare Blade Item Nos.
No.J-450	Medium-Fine teeth.	450mm	0.8mm	1.05mm	3.75mm(7TPI)	No.J-450/SB
No.J-380	Medium-Fine teeth.	380mm	0.6mm	0.90mm	2.50mm(10TPI)	No.J-380/SB
No.J-300	Medium-Fine teeth, Impulse hardened.	300mm	0.6mm	0.90mm	1.87mm(14TPI)	No.J-300/SB
No.J-270	Medium-Fine teeth, Impulse hardened.	270mm	0.5mm	0.75mm	1.66mm(15TPI)	No.J-270/SB

DOZUKI SAW

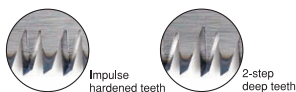
Steel back for better rigidity and super-fine toothing. Super-fine cut saw features the thinnest blade for fine woodworking, furniture making, crafts, dovetail and wood-joint. Impulse hardened teeth edge.



Item No.	Specifications:	Blade Length:	Blade Thickness:	Kerf:(±0.05mm)	Tooth Space(TPI)	Spare Blade Item No.
No.J-270D	Super-Fine teeth, Cross-cutting, polished finish.	270mm	0.3mm	0.45mm	1.36mm(19TPI)	No.J-270D/SB

RYOBA SAW:Double-Edge Saw

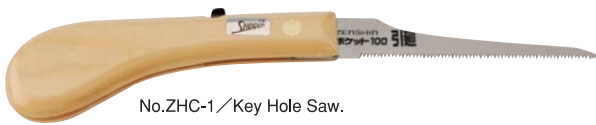
Ryoba saw has one edge for rip-cutting and another, Impulse hardened, cross-cutting edge. Rip-cutting tooth space is reduced by 0.02mm per edge from toe to heel for smooth cutting.



Item Nos.	Blade Length:	Blade Thickness:	Kerf:(±0.05mm)	Tooth Space	Spare Blade Item Nos.
No.J-240W	240mm	0.7mm	1.0mm	1.66mm(15TPI) & 4.22 reduce by 0.02/per edge	No.J-240W/SB
No.J-210W	210mm	0.4mm	0.6mm	1.15mm(22TPI) & 3.74mm reduced by 0.02/per edge	No.J-210W/SB

UTILITY FOLDING MINI-SAWS.

Super-fine tooting in combination with a very thin blade gives an accurate cut. Impulse hardened and non-electro plated blade is extremely sharp and prevents rust. FOLDED LENGTH:140mm



No.ZHC-1 / Key Hole Saw.



No.ZHC-5 / PVC Pipe Cut Saw.



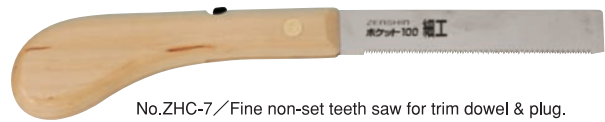
No.ZHC-2 / Pruning Saw.



No.ZHC-6 / Wood Cut Saw.



No.ZHC-3 / Bamboo Cut Saw.



No.ZHC-7 / Fine non-set teeth saw for trim dowel & plug.



No.ZHC-4 / Fine teeth Wood Cut Saw.

Item Nos.	Specifications:	Blade Length:	Blade Thickness:	Tooth Space
No.ZHC-1	Key Hole Saw.	100mm	0.7mm	1.5mm
No.ZHC-2	Pruning Saw.	100mm	0.6mm	2.0mm
No.ZHC-3	Bamboo Cut Saw.	100mm	0.6mm	1.6mm
No.ZHC-4	Fine teeth Wood Cut Saw.	100mm	0.4mm	1.0mm
No.ZHC-5	PVC Pipe Cut Saw.	100mm	0.6mm	1.8mm
No.ZHC-6	Wood Cut Saw.	100mm	0.6mm	1.3mm
No.ZHC-7	Fine non-set teeth saw for trim dowel & plug.	100mm	0.4mm	1.0mm

FLUSH CUT SAWS.

Flexible thin blades with non-set teeth for trim dowels, plugs and wooden nails without scratching or damaging the surface of the wood.



No.FL-150 / V teeth



No.FL-110 / TRIPLE EDGES teeth



Item Nos.	Specifications:	Blade Length:	Blade Thickness:	Tooth Space(TPI)
No.FL-150	V teeth.	150mm	0.6mm	19TPI
No.FL-110	TRIPLE EDGES teeth.	110mm	0.5mm	22TPI



CRAFT WORK SAWS.

HOOK TYPE, CHANGEABLE BLADE COMPACT HANDY SAW.
 Fine toothing in combination with a very thin blade gives an accurate cut.
 As the teeth have very little set, except No.CR-02, the cut surface is very smooth.
 Non-slip elastomer-plastic handle.

No.CR-01

Craft-work saw for bamboo cutting.



Item No.	Blade Length:	Overall Length:	Blade Thickness:	Kerf:(±0.05mm)	Tooth Space(TPI)	Spare Blade Item No.
No.CR-01	180mm	330mm	0.7mm	1.05mm	16TPI	No.CR-01/SB

No.CR-02

Flush cut saw with non-set teeth for trim dowels, and wooden nails without scratching or damaging the wood's surface.



Item No.	Blade Length:	Overall Length:	Blade Thickness:	Kerf:(±0.05mm)	Tooth Space(TPI)	Spare Blade Item No.
No.CR-02	150mm	315mm	0.5mm	0.75mm	15TPI	No.CR-02/SB

No.CR-03

Pruning saw for green wood cutting.



Item No.	Blade Length:	Overall Length:	Blade Thickness:	Kerf:(±0.05mm)	Tooth Space(TPI)	Spare Blade Item No.
No.CR-03	180mm	325mm	0.7mm	1.05mm	11TPI	No.CR-03/SB

No.CR-04

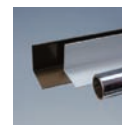
Wave plastic sheet cutting saw.



Item No.	Blade Length:	Overall Length:	Blade Thickness:	Kerf:(±0.05mm)	Tooth Space(TPI)	Spare Blade Item No.
No.CR-04	180mm	325mm	0.4mm	0.6mm	Uncountable	No.CR-04/SB

No.CR-05

General purpose MICRO saw for nonferrous and plastic cutting.



Item No.	Blade Length:	Overall Length:	Blade Thickness:	Kerf:(±0.05mm)	Tooth Space(TPI)	Spare Blade Item No.
No.CR-05	140mm	270mm	0.35mm	0.7mm	24TPI	No.CR-05/SB

No.CR-06

Craft-work saw for wood cutting.



Item No.	Blade Length:	Overall Length:	Blade Thickness:	Kerf:(±0.05mm)	Tooth Space(TPI)	Spare Blade Item No.
No.CR-06	160mm	295mm	0.4mm	0.6mm	20TPI	No.CR-06/SB

MIGHTY RYOBA SAW.

CHANGEABLE BLADE TYPE DOUBLE EDGE SAW.

Mighty-Ryoba saw is designed for trim, detail and craft or hobby work.

The blade is non-electro nickel-plated for smooth cutting and rust prevention.

Rip cutting tooth space is reduced by 0.02 mm per edge from toe to heel for smooth cutting.

Comfortable non-slip elastomer-plastic handle.



Item No.	Blade Length:	Blade Thickness:	Kerf:(±0.05mm)	Tooth Space(TPI)	Spare Blade Item No.
No.Z-210	210mm	0.5mm	0.7mm	1.3mm(20TPI) & 3.8mm reduced by 0.02mm/per edge	No.Z-210/SB

MIGHTY POCKET SAWS.

CHANGEABLE BLADE TYPE POCKET SAW FOR VARIOUS PURPOSE CUTTING WORKS.

The blade is non-electro nickel-plated for smooth cutting and rust prevention, with elastomer-plastic comfort grip.

Saw is stored in a plastic sheath.

No.Z-160/W

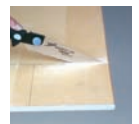
Carpentry saw for wood cutting.



Item No.	Blade Length:	Overall Length:	Blade Thickness:	Kerf:(±0.05mm)	Tooth Space(TPI)	Spare Blade Item No.
No.Z-160/W	160mm	305mm	0.5mm	0.7mm	1.3mm(20TPI)	No.Z160/WSB

No.Z-160/G

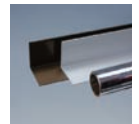
General purpose saw for gypsum cutting.



Item No.	Blade Length:	Overall Length:	Blade Thickness:	Kerf:(±0.05mm)	Tooth Space(TPI)	Spare Blade Item No.
No.Z-160/G	160mm	305mm	0.5mm	0.7mm	1.5mm(17TPI)	No.Z-160/GSB

No.Z-160/M

General purpose saw for cutting non-ferrous and plastic cutting.



Item No.	Blade Length:	Overall Length:	Blade Thickness:	Kerf:(±0.05mm)	Tooth Space(TPI)	Spare Blade Item No.
No.Z-160/M	160mm	305mm	0.5mm	0.7mm	1.4mm(18TPI)	No.Z-160/MSB

No.Z-160/P

Pruning saw for green wood cutting.



Item No.	Blade Length:	Overall Length:	Blade Thickness:	Kerf:(±0.05mm)	Tooth Space(TPI)	Spare Blade Item No.
No.Z-160/P	160mm	305mm	0.5mm	0.7mm	2.7mm(10TPI)	No.Z-160/PSB



FLUSH CUT SAWS.

CHANGEABLE BLADE TYPE COMPACT SAWS.

Super-Fine toothing in combination with a very thin blade gives accurate cut dovetail, tenon-shoulder, trim dowel, wood-joint and wooden nails. As the teeth have very little set, the cut surface is very smooth and scratching the surface of the wood is minimized. Comfortable non-slip elastomer-plastic handle.

No.J-180

Flush cut pull saw, KATABA(Single-edge)



Impulse hardened teeth



Item No.	Blade Length:	Overall Length:	Blade Thickness:	Kerf:(±0.05mm)	Tooth Space(TPI)	Spare Blade Item No.
No.J-180	180mm	355mm	0.4mm	0.5mm	1.07mm(24TPI)	No.J-180/SB

No.J-170W

Flush cut pull saw, RYOBA(Double-edge)



Item No.	Blade Length:	Overall Length:	Blade Thickness:	Kerf:(±0.05mm)	Tooth Space(TPI)	Spare Blade Item No.
No.J-170W	170mm	350mm	0.6mm	0.9mm	1.58mm(16TPI) & 1.87mm(14TPI)	No.J-170W/SB

HANDY SAWS.

COMPACT SIZE HANDY SAW PACKS EASILY INTO TOOL BOXES. Polished carbon steel blade with elastomer-plastic handle.

No.MR-190S

Handy cross-cut saw, KATABA, for wood cutting. Hook type changeable blade.



Impulse hardened teeth



Item No.	Blade Length:	Overall Length:	Blade Thickness:	Kerf:(±0.05mm)	Tooth Space(TPI)	Spare Blade Item No.
No.MR-190S	190mm	440mm	0.55mm	1.2mm	18TPI	No.MR-190S/SB

No.MR-190W

Handy rip- and cross-cut saw, RYOBA, for wood cutting. Impulse hardened cross-cut teeth edge, fixed blade type.



Item No.	Blade Length:	Overall Length:	Blade Thickness:	Kerf:(±0.05mm)	Tooth Space(TPI)	Spare Blade Item No.
No.MR-190W	190mm	410mm	0.6mm	1.2mm	13&7TPI	Nil

No.MR-180D

Handy carpentry saw, DOZUKI, for wood cutting. Fixed blade type.



Item No.	Blade Length:	Overall Length:	Blade Thickness:	Kerf:(±0.05mm)	Tooth Space(TPI)	Spare Blade Item No.
No.MR-180D	180mm	405mm	0.4mm	0.9mm	29TPI	Nil

MIGHTY PRUNING SAWS.

A general purpose saw for cutting both dry and green wood.
The hollow-ground and hard-chrome plated blade is made from the finest carbon steel and features no-set teeth.
Each tooth edge is diamond ground and impulse hardened for long-lasting sharpness.
Comfortable non-slip elastomer-plastic handle.
Saw is stored in a plastic sheath.



Impulse hardened teeth



Item Nos.	Blade Length:	Blade Thickness:	Kerf:(±0.05mm)	Tooth Space(TPI)	Spare Blade Item Nos.
No.P-210ST	210mm	1.00mm	1.00mm	3.0mm(8TPI)	No.P-210ST/SB
No.P-240ST	240mm	1.05mm	1.05mm	3.5mm(8TPI)	No.P-240ST/SB
No.P-270ST	270mm	1.35mm	1.35mm	4.0mm(7TPI)	No.P-270ST/SB
No.P-300ST	300mm	1.35mm	1.35mm	4.0mm(7TPI)	No.P-300ST/SB

PRO-Series PRUNING SAWS.

PRO-Series is a superior Pruning Saw for cutting green wood.
The blade is made from the finest Japanese high-carbon steel and features the hardness-HRC57.
Fluoroplastic-coated black blade gives corrosive protection and low friction when sawing.
Less effort is required and the strong surface coating increases the hardness of the blade.
Set teeth in small kerf for cutting smooth with less friction.
Saw is stored in an attractively designed man-made leather sheath.



Item Nos.	Blade Length:	Blade Thickness:	Kerf:(±0.05mm)	Tooth Space(TPI)	Spare Blade Item Nos.
No.PRO-180	180mm	0.85mm	1.05mm	2.5mm(10TPI)	No.PRO-180/SB
No.PRO-210	210mm	0.85mm	1.05mm	3.0mm(8TPI)	No.PRO-210/SB
No.PRO-240	240mm	0.85mm	1.05mm	3.0mm(8TPI)	No.PRO-240/SB
No.PRO-270	270mm	0.85mm	1.05mm	3.0mm(8TPI)	No.PRO-270/SB



MULTI-PURPOSE HANDY FOLDING SAWS.

SHOGUN handy folding saws are compact and truly versatile yard, gardening, construction work, camping and hunting saws.

Cuts everything from green wood, fire wood, compiled wood to plastic pipe.

Even cuts fish and animal bones cleanly, quickly and easily.

Each tooth edge is ground by diamond borazon wheel and Impulse hardened for long-lasting sharpness.

HI-BRID HANDY FOLDING SAWS

The simple finger button locks the blade.
Comfortable non-slip elastomer-plastic handle.



Impulse hardened teeth



Item Nos.	Specifications:	Blade Length:	Blade Thickness:	Kerf:(±0.05mm)	Tooth Space(TPI)	Spare Blade Item Nos.
No.HB-210	Set free, taper ground & hard-chrome-plated blade.	210mm	1.2mm	1.2mm	3mm(8TPI)	No.HB-210/SB
No.HB-240	Set free, taper ground & hard-chrome-plated blade.	240mm	1.2mm	1.2mm	3mm(8TPI)	No.HB-240/SB

MY HOBBY-180 HANDY FOLDING SAW

Lightweight aluminium handle with elastomer-plastic grip.
The simple finger button locks the blade.



Impulse hardened teeth



Item Nos.	Specifications:	Blade Length:	Blade Thickness:	Kerf:(±0.05mm)	Tooth Space(TPI)	Spare Blade Item Nos.
No.MH-180	Set free, taper ground & non-electro nickel-plated blade.	180mm	1.2mm	1.5mm	4mm	No.MH-180/SB

MY HOBBY-150 HANDY FOLDING SAW

Lightweight aluminium handle with elastomer-plastic grip.
The simple finger button locks the blade.



Impulse hardened teeth



Item Nos.	Specifications:	Blade Length:	Blade Thickness:	Kerf:(±0.05mm)	Tooth Space(TPI)	Spare Blade Item Nos.
No.MH-150	Set free, taper ground & non-electro nickel-plated blade.	150mm	1.2mm	1.5mm	3mm	No.MH-150/SB

TARGET-150 FOLDING PRUNING SAW

Each tooth edge is ground by diamond borazon wheel and Impulse hardened for long-lasting sharpness.



Impulse hardened teeth



Item Nos.	Specifications:	Blade Length:	Blade Thickness:	Kerf:(±0.05mm)	Tooth Space(TPI)	Spare Blade Item Nos.
No.MT-150	Set free, taper ground & non-electro nickel-plated blade.	150mm	1.3mm	1.8mm	3.5mm	No.MT-150/SB

CURVED FOLDING PRUNING SAW

Polished carbon steel, with plastic handle.



Item Nos.	Specifications:	Blade Length:	Blade Thickness:	Kerf:(±0.05mm)	Tooth Space(TPI)	Spare Blade Item Nos.
No.MT-180C	Set teeth, polished finish blade.	180mm	1.2mm	1.8mm	5mm	No.MT-180C/SB
No.SF-180C	Set-free, taper ground & non-electro-plated blade.	180mm	1.2mm	1.5mm	4mm	No.SF-180C/SB

FORESTRY & HORTICULTURE SAWS.

Heavy duty superior quality Forestry Saw for cutting both dry and green wood.
Hard-chrome-plated finish heavy gauge, 1.4 mm. spring steel gives the blade a high stability when cutting both dry and green wood.

The saws have a wide range of applications for pruning, fruit trees and general pruning of bushes.
29 mm. diameter steel tubular grip with 2 slits and wing nuts is convenient for attaching the extension pole.

Each 5th edge is not set tooth for scraping out wood chip easier.

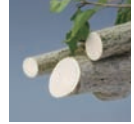
BLADE LENGTH: adjust spacing 460 mm.(18")

TUBULAR GRIP LENGTH: 190 MM.(7.1/2")

26mm. diameter steel tubular grip is available on demand.

No.MK-16/DX

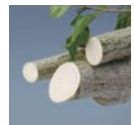
Forestry curved saw, with sickle and cutter blade.



Item Nos.	Specifications:	Blade Length:	Blade Thickness:	Kerf:(±0.05mm)	Tooth Space(TPI)	Spare Blade Item Nos.
No.MK-16/DX	Forestry curved saw, with sickle & cutter blade.	380mm	1.4mm	2.0mm	4mm(7TPI)	No.MK-16/DX/SB
No.MK-16/DX/H	Same as No.MK-16/DX, but Impulse hardened edge.	380mm	1.4mm	2.0mm	4mm(7TPI)	No.MK-16/DX/H/SB

No.MK-16/DX/S

Forestry curved saw, with sickle.



Item Nos.	Specifications:	Blade Length:	Blade Thickness:	Kerf:(±0.05mm)	Tooth Space(TPI)	Spare Blade Item Nos.
No.MK-16/DX/S	Forestry curved saw, with sickle blade.	380mm	1.4mm	2.0mm	4mm(7TPI)	No.MK-16/DX/S/SB
No.MK-16/DX/S/H	Same as No.MK-16/DX/S, but Impulse hardened edge.	380mm	1.4mm	2.0mm	4mm(7TPI)	No.MK-16/DX/S/H/SB

No.MK-16/DX/C

Forestry curved saw, with cutter blade.



Item Nos.	Specifications:	Blade Length:	Blade Thickness:	Kerf:(±0.05mm)	Tooth Space(TPI)	Spare Blade Item Nos.
No.MK-16/DX/C	Forestry curved saw, with cutter blade.	380mm	1.4mm	2.0mm	4mm(7TPI)	No.MK-16/DX/C/SB
No.MK-16/DX/C/H	Same as No.MK-16/DX/C, but impulse hardened edge.	380mm	1.4mm	2.0mm	4mm(7TPI)	No.MK-16/DX/C/H/SB

No.MK-16/SHEATH

CANVAS CLOTH SAW SHEATH for forestry curved saws



FORESTRY & HORTICULTURE SAWS.

No.MK-16

350mm. CURVED PRUNING SAW.
Polished carbon steel blade with red painted round steel tubular grip.

Note:

Available 26mm or 29mm diameter round tubular grip for extension pole, please indicate your required size when you order.



Item Nos.	Specifications:	Blade Length:	Blade Thickness:	Kerf:(±0.05mm)	Tooth Space(TPI)	Spare Blade Item Nos.
No.MK-16	Standard heat-treated blade.	350mm	1.2mm	1.8mm	4mm(7TPI)	No.MK-16/SB
No.MK-16/H	Impulse hardened edge blade.	350mm	1.2mm	1.8mm	4mm(7TPI)	No.MK-16/H/SB

No.MKH-250

330mm(13") CURVED PRUNING SAW.
Polished carbon steel blade with 26mm. diameter. steel tubular grip for extension pole.



Item Nos.	Specifications:	Blade Length:	Blade Thickness:	Kerf:(±0.05mm)	Tooth Space	Spare Blade Item Nos.
No.MKH-250	Standard heat-treated blade.	330mm(13")	1.2mm	1.8mm	5mm	No.MKH-250/SB
No.MKH-250/H	Impulse hardened edge blade.	330mm(13")	1.2mm	1.8mm	5mm	No.MKH-250/H/SB

No.MK-250

330mm(13") CURVED PRUNING SAW.
Polished blade with 26mm. diameter. steel tubular grip for extension pole.



Item Nos.	Specifications:	Blade Length:	Blade Thickness:	Kerf:(±0.05mm)	Tooth Space	Spare Blade Item Nos.
No.MK-250	Standard heat-treated blade.	330mm(13")	1.2mm	1.8mm	5mm	No.MK-250/SB
No.MK-250/H	Impulse hardened edge blade.	330mm(13")	1.2mm	1.8mm	5mm	No.MK-250/H/SB

No.MK-330

330mm(13") CURVED PRUNING SAW.
Polished blade with 26mm. diameter plastic tubular grip for extension pole.



Item Nos.	Specifications:	Blade Length:	Blade Thickness:	Kerf:(±0.05mm)	Tooth Space(TPI)	Spare Blade Item Nos.
No.MK-330	Standard heat-treated blade.	330mm(13")	1.2mm	1.8mm	4mm(7TPI)	No.MK-330/SB
No.MK-330/H	Impulse hardened edge blade.	330mm(13")	1.2mm	1.8mm	4mm(7TPI)	No.MK-330/H/SB

No.MK-330/WH

330mm(13") CURVED PRUNING SAW.
Polished blade with wooden handle.



Item Nos.	Specifications:	Blade Length:	Blade Thickness:	Kerf:(±0.05mm)	Tooth Space(TPI)	Spare Blade Item Nos.
No.MK-330/WH	Standard heat-treated blade.	330mm(13")	1.2mm	1.8mm	4mm(7TPI)	No.MK-330/SB
No.MK-330/WH/H	Impulse hardened edge blade.	330mm(13")	1.2mm	1.8mm	4mm(7TPI)	No.MK-330/H/SB

TELESCOPIC POLE SAWS.

Lightweight aluminum oval poles, with non-slip rubber grip.
Blade angle can be adjusted in 3-ways and foldable blade No.MK-2M & No.MK-3M.
Hard-chrome plated finish blade.



Item Nos.	Specifications:	Blade Length:	Blade Thickness:	Kerf:(±0.05mm)	Tooth Space(TPI)	Spare Blade Item Nos.
No.MK-1M	Single aluminum pole, 1.3M, unfoldable blade.	270mm	0.9mm	1.35mm	2.72mm(9TPI)	No.MK-1M/SB
No.MK-2M	Telescopic pole, 1.2M—2.0M, foldable blade.	320mm	1.0mm	1.50mm	3.75mm(7TPI)	No.MK-2M/SB
No.MK-3M	Telescopic pole, 1.7M—3.0M, foldable blade.	320mm	1.0mm	1.50mm	3.75mm(7TPI)	No.MK-3M/SB

DELUXE FOLDING POCKET SAW.

No.MK-90

Well-designed folding pocket saw.
Polished with the finest carbon steel blade with hard, wooden handle.



Item No.	Blade Length:	Overall Length:	Blade Thickness:	Kerf:(±0.05mm)	Tooth Space(TPI)
No.MK-90	90mm	225mm	1.2mm	1.5mm	2mm

Miki Tool Co., Ltd.

1-334, Nakajiyugaoka, Shijimi, Miki,
Hyogo-Pref. 673-0552, Japan
Tel.: +81 794 85 8828
Fax.: +81 794 85 7307
E-mail: info@mikitool.co.jp
URL: <http://www.mikitool.co.jp>

