

CAMO[®]
DRIVE[™]
DECK RESPONSIBLY[™]

ENGLISH

OWNER'S MANUAL

 **NATIONAL
NAIL**
(616) 538-8000
CAMOFASTENERS.COM

REV. 8/19/19

WELCOME TO CAMO®

Congratulations on purchasing the CAMO® DRIVE™. You have selected a brand you can count on to deliver best practice installation, and perform job after job. Please take the time to read and understand the information contained in this Owner's Manual before operating the CAMO® DRIVE™.

The CAMO® DRIVE™ is a versatile tool that enables you to Edge, Clip, or Face fastening wood, composite, or PVC deck boards to the deck substructure. Improper use of the CAMO® DRIVE™ could result in serious injury.

TABLE OF CONTENTS

IMPORTANT INFORMATION.....	4
TOOL SPECIFICATIONS	5
ASSEMBLING THE CAMO® DRIVE™	6
LOADING THE FASTENERS.....	7
FASTENER INSTALLATION	9
CAMO® DRIVE™ PARTS LIST	12
WARRANTY	13

IMPORTANT INFORMATION

TERMINOLOGY

The following terms will apply interchangeably throughout this Owner's Manual:

Driver Drill / the Drill

Attachment / CAMO' DRIVE™

Tool - refers to CAMO' DRIVE™ assembled with driver drill

PERSONAL SAFETY ITEMS

- Do not use the Tool and/or components prior to reading the CAMO' DRIVE™ Owner's Manual.
- Always wear eye protection that conforms to ANSI requirements (Z87.1) and provides protection against flying particles both from the front and side. Eye protection should be worn by the operator and by others in the work area. Eye protection is required to protect against flying fasteners and debris that could possibly cause severe eye injury.
- The user is responsible to enforce the use of eye protection equipment by the Tool operator and all other personnel in the work area.
- To prevent accidental injuries: Handle the Tool and components with care - Always assume that the Tool contains fasteners - Always disconnect the power from the Driver Drill when:
 - Loading CAMO' Collated Fasteners for DRIVE
 - Performing inspection, maintenance or repair
 - Clearing a screw jam
 - The Tool is not in use
 - Leaving the work area
 - Moving the Tool to another work location
 - Handing the Tool to another person
- Storing the Tool - To reduce the risk of electric shock and damage to the Tool, never immerse the Tool in liquid or allow a liquid to flow inside the Tool - Never point the Tool toward yourself or anyone else - Never engage in horseplay - Never hold or carry the Tool with a finger on the trigger of the drill. - Never place a hand or any other part of the body in the fastener discharge area of the attachment while the power is connected.

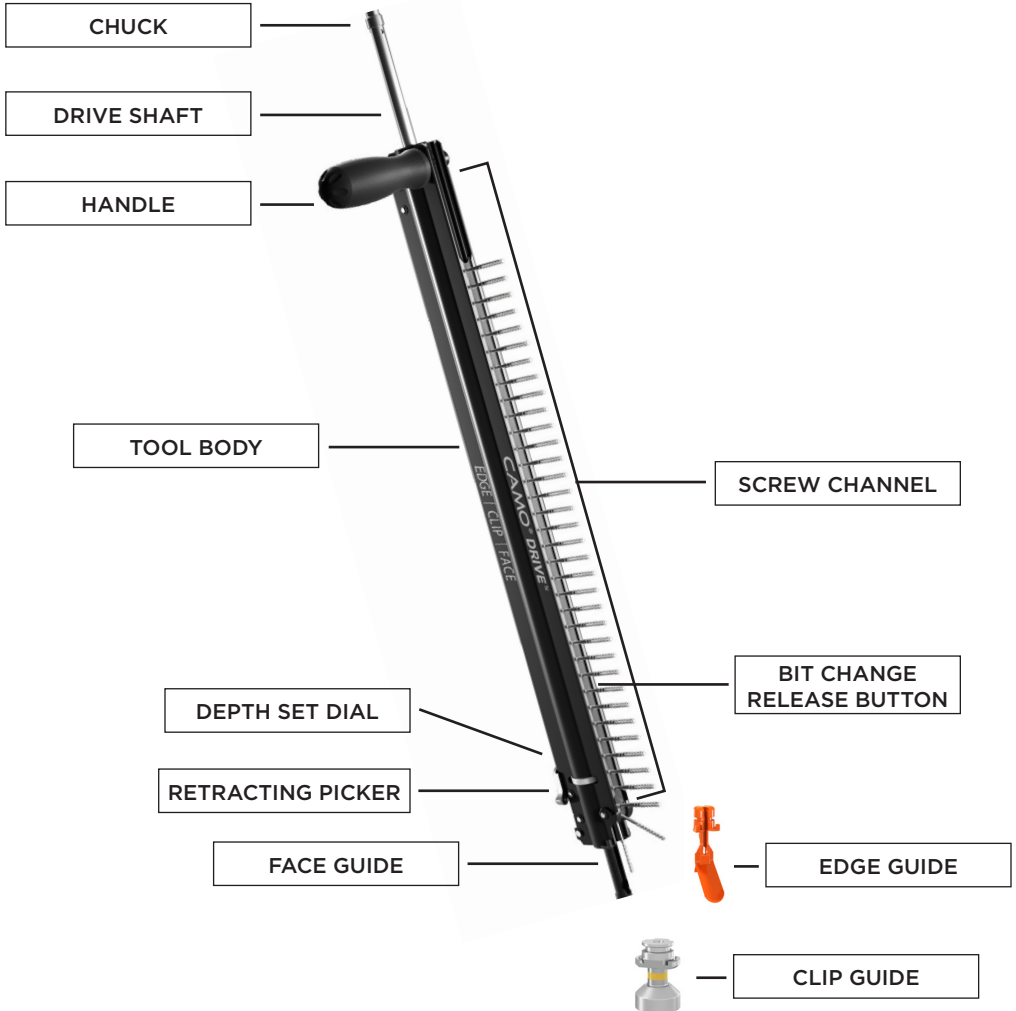
OPERATION OF THE TOOL

- Never inspect, maintain, repair, adjust, clear a jam or store the Tool with the power connected.
- Never use the Tool in proximity of flammable gases or liquids, as some tools will create sparks that can be an ignition source for a fire or explosion.
- Never assume the Tool is empty of fasteners.
- Never point the Tool toward yourself or any other persons.
- Never drive the Tool unless it is in contact with the work-piece.
- Never use the Tool as a hammer or wedging device or drop to the floor from any height.
- Use only CAMO' Collated Fasteners with the DRIVE™. Never use any fasteners that are not specified for use with this Attachment. The DRIVE™ holds one (1) strip of 50 CAMO' Collated Fasteners.

TOOL SPECIFICATIONS

CAMO[®] Collated Fasteners, CAMO[®] Tools and CAMO[®] Driver Bits are engineered to work exclusively together. Using other branded tools, fasteners or bits will impair performance and not produce the desired results.

The CAMO[®] DRIVE™ utilizes a Driver Drill (not included).



USING THE CAMO® DRIVE™

INSTALLING THE HANDLE

The DRIVE™ can be set up for left or right hand use.



The handle is attached to the tool body screwing it onto the bolt found installed at the top of the tool body.

You can reverse the handle set up by simply loosening the bolt and re-installing it to the other side of the tool body.

DETERMINING IF YOU WILL USE EDGE, CLIP, OR FACE FASTENING

You will need one of the two included bits and guides for your installation.

- For Edge fastening you will install a CAMO® T-15 driver bit and the Edge guide.
- For Clip fastening, you will install a CAMO T-15 driver bit and the Clip guide.
- For Face (top down) fastening you will need to install the CAMO® T-20 bit and the Face guide.

INSTALLING THE DRIVER BITS



Use a bit to depress the release button in the channel.



As you depress the release button, remove the lower body of the tool.



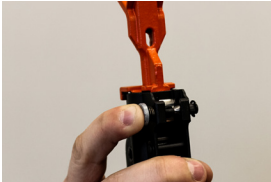
Pull the chuck back to allow the bit to pull free and install the new bit.



Replace the lower tool body - it will click into place.

CHANGING THE GUIDE

Always remove the collation strip before removing the guide.



Depress the thumb release button.



Pull the guide free from tool.

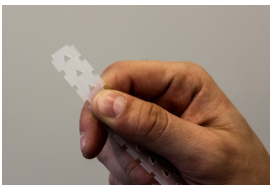


Insert new guide paying attention to the direction of the alignment tabs.

LOADING SCREW STRIPS

Be sure that you have the correct bit size inserted for the fastener that you are driving! The CAMO[®] DRIVE™ has both necessary bit sizes include in the package.

Edge: T15 Clip: T15 Face: T20



Insertion end of screw strip has arrows



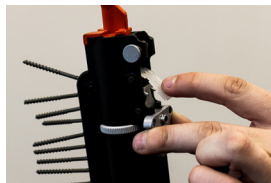
Slide strip into screw strip channel



Slide collation strip up and through the nose of the tool until it will go no further



Hold body of the tool with one hand so that screws stay in place



Slide picker up to nose of the tool and fold the open strip onto the picker teeth with your pointer finger



Caution! Be very careful not to let go of the picker as it will recoil very quickly and could damage the tool when it strikes the stop.

Make sure the strip is firmly hooked to the picker teeth.

UNLOADING SCREW STRIPS



Slowly return the picker to the bottom of tool. Caution! Be very careful not to let go of the picker as it will recoil very quickly and could damage the tool when it strikes the stop.

To unload the installed strip of screws, slide the picker up to the nose of tool where strip was first attached. This will release the tension and the strip should pop free of the picker teeth.

ATTACHING YOUR DRIVER DRILL

CAMO[®] DRIVE[™] is able to be used with either a tightening chuck or a locking chuck.

TO ATTACH CAMO[®] DRIVE[™] TO A TIGHTENING CHUCK



To attach to a tightening chuck, simply insert the large collar of the drive shaft into the drill chuck and tighten

TO ATTACH CAMO[®] DRIVE[™] TO A LOCKING CHUCK



Take an extra CAMO[®] DRIVE[™] bit and insert into the end of the collar



Attach your driver drill's locking chuck to the smaller bit

Make sure the drive shaft is securely tightened before driving screws

FASTENER INSTALLATION - EDGE SCREW

Before beginning installation of your deck, you will need the following:

- CAMO' DRIVE™ Tool
- CAMO' Collated Fasteners
- Driver Drill (Corded or cordless)
- Optional: Secondary Spacers if a gap is desired

DRIVE tool setup:

- Make sure you have a T15 DRIVE bit installed in the DRIVE tool. The T15 bit is identified with a yellow and orange color band on the bit.



- Attach the edge guide on the DRIVE tool (see changing the guide section on page 7).
- Drill clutch setting: If your driver drill has a clutch setting it should be in "drill or maximum torque" setting position.

Edge Screw Fastening with the DRIVE™ enables you to install a beautiful fastener-free deck surface at an incomparable speed. Engineered for no gap installation of treated lumber. If gapped installation is desired, use secondary spacers.

Gap Options:

The CAMO' DRIVE™ allows for multiple gap options when installing deck boards. For wet treated lumber, the zero gap option allows builders to butt deck boards tightly together. If a gap is desired, secondary spacers may be used between the boards.

Board Installation:

To begin deck installation, lay the first board that abuts the structure into position. Starting with the outside edge of the board, fasten the deck board at each joist using the CAMO' DRIVE™ as follows:

For the outer board end of the deck board, align the Edge Guide with the joist below the deck board (a minimum of 1" from board ends). Place the nose of the DRIVE™ tool so that the Edge Guide is flat to the board surface, with the Edge Guide tight to the board edge.



Using the Tool Handle, apply downward pressure to make sure that the nose stays firmly in position with the board edge throughout the drive process.

While maintaining positive pressure on the DRIVE™ tool, push the Driver Drill down to engage the bit and screw. Depress the drill trigger and, running the drill at full RPM, drive the screw applying pressure throughout. **DO NOT FORCE THE SCREW.** Allow the Edge screw to spin and auger the surface. After a moment, the screw will grab and pull into the board. The drill and tool will be fully compressed when the screw is fully seated. When driven fully and correctly, the finished position of the Edge screw should be just below the surface of the edge. It should not protrude from the side of the board. (Adjust if necessary.)

Once the fastener is driven, retract the driver drill fully allowing the next screw to be pulled into place for driving. The next fastener will automatically be loaded into drive position. Repeat down the length of the board.

Place the next deck board in position and push tight to the board abutting the structure. Repeat process above.

For the inside edge of the deck board, align the Edge Guide with the joist below the deck board, positioning the Edge Guide between the two adjoining deck boards. Make sure that the Edge Guide is parallel with the surface of the deck board and the Edge Guide is firmly against the radius of the edge of the deck board. Maintain firm pressure against the deck board throughout the drive process.

Repeat down the length of the board until the board is secured at every joist and both sides of the board.. Do not skip any joists. Repeat for remaining deck boards.

Visit www.camofasteners.com/videos for video instructions.

FASTENER INSTALLATION - EDGECLIP & EDGEXCLIP

DRIVE tool setup:

- Make sure you have a T15 DRIVE bit installed in the DRIVE tool. The T15 bit is identified with a yellow and orange color band on the bit.



- **ATTENTION! ONLY USE THE COLOR-CODED DRIVE BIT - BIT INCLUDED IN THE EDGECLIP OR EDGEXCLIP PAILS IS FOR HAND DRIVE**
- Attach the clip guide on the DRIVE tool (see changing the guide section on page 7).
- It is not necessary to load any screws into the DRIVE tool as the EdgeClips and EdgeXClips come pre-assembled.
- Drill clutch setting: If your drill has a clutch setting please start by setting the clutch to a medium low setting (30% of maximum torque). Drive tool should drive the screw and snugly tighten down the board. If that torque setting is not sufficient to allow the screw to be driven completely, slightly increase the torque until the the screws securely tighten the clip in place. Excessive torque can cause over-driving resulting screw spin-out or stripping.

Board Installation:

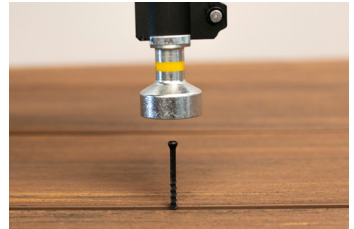
Once your starter board is fastened in place you are ready to begin installing the rest of your deck with EdgeClip or EdgeXClip using the DRIVE tool.

Follow the Clip installation instructions included with your EdgeClip or EdgeXClip for instruction on placing the clips in the groove of the decking.

Once your clips are set between the deck boards, you can now use the DRIVE tool to tighten down all of the clips securing your decking.

- Place the Clip Guide installed on your DRIVE tool over the screw
- Depress the drill trigger running at full RPM and apply downward pressure
- The Clip Guide will direct the DRIVE bit engaging the head of the screw and securing the clip in place

Visit camofasteners.com/videos for video instructions.



FASTENER INSTALLATION - FACE SCREW

Face Screw Fastening with the DRIVE™ allows you to face screw deck boards down using CAMO® collated face wood screws and CAMO® color matched composite screws.

DRIVE tool setup:

- Make sure you have a T20 DRIVE bit installed in the DRIVE tool. The T20 bit is identified with a black color band on the bit.



- Attach the clip guide on the DRIVE tool (see changing the guide section on page 7).
- Drill clutch setting: If your driver drill has a clutch setting it should be in "drill or maximum torque" setting position.

Gap Options:

The CAMO® DRIVE™ allows for multiple gap options when installing deck boards. For wet treated lumber, the zero gap option allows builders to butt deck boards tightly together. If a gap is desired, secondary spacers may be used between the boards.

Board Installation:

Be sure that you have the correct bit size inserted for the fastener that you are driving! The DRIVE™ has both of the necessary bit sizes include in the package.

Screw Drive Depth:

Utilizing the Depth dial on the tool, you can adjust the depth of drive to your preference.

To begin deck board installation, lay the first board into position. Fasten the deck board with 2 screws at each joist using the CAMO® DRIVE™ as follows:

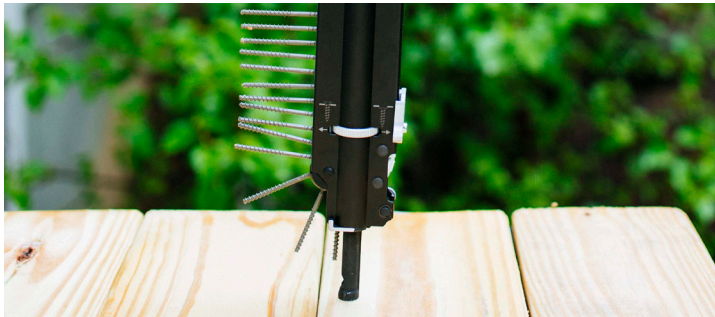
Using the Tool Handle, apply downward pressure to make sure that the nose stays firmly in position with the board throughout the drive process.

While maintaining positive pressure on the DRIVE™ tool, push the Driver Drill down to engage the bit and screw. Depress the drill trigger and, running the drill at full RPM, drive the screw applying pressure throughout. The screw will be fully driven once the driver drill and tool are full compressed.

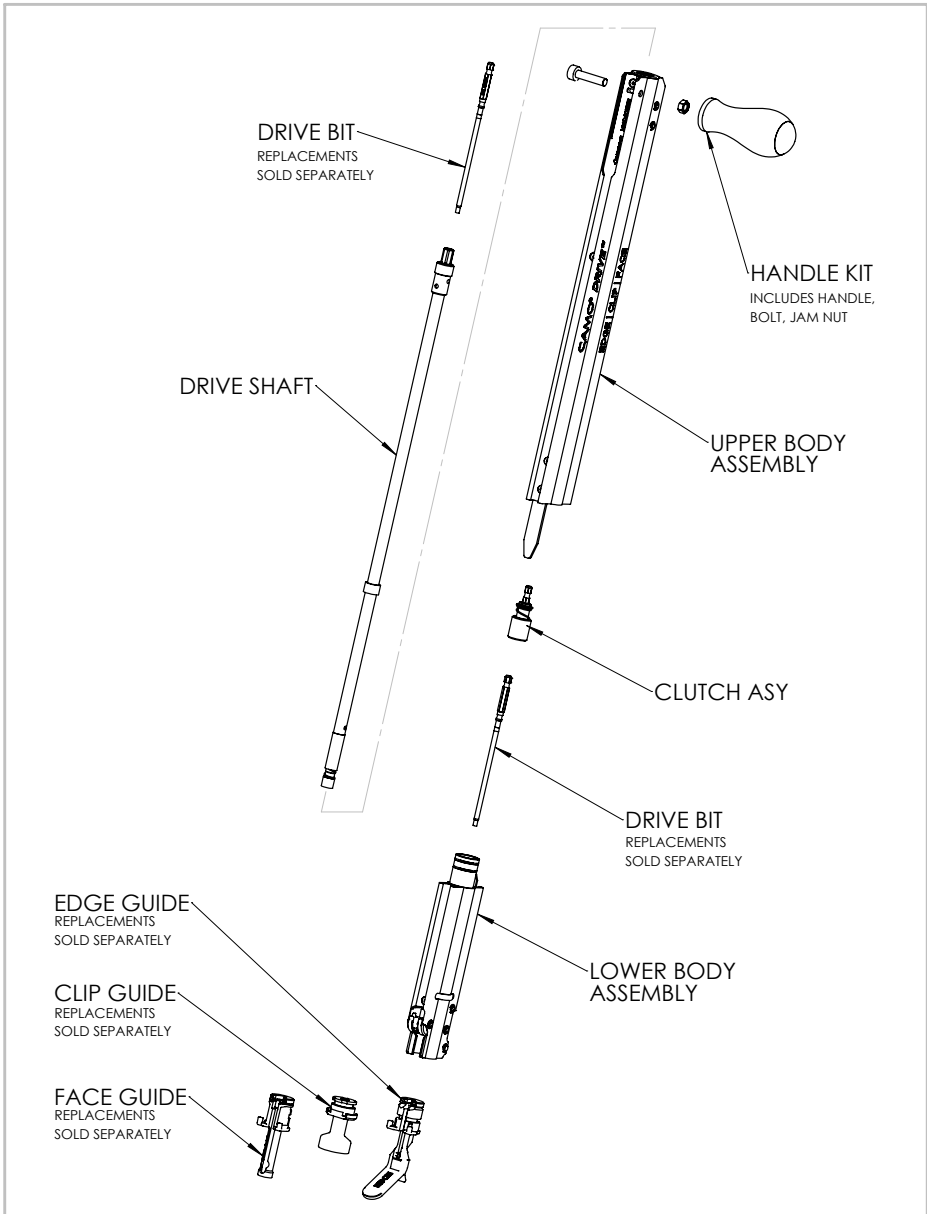
Once the fastener is driven, retract the driver drill fully allowing the next screw to be pulled into place for driving. The next fastener will automatically be loaded into drive position.

Repeat down the length of the board until the entire plank is installed. Do not skip any joists.

Visit www.camofasteners.com/videos for video instructions.



PARTS LIST



LIMITED WARRANTY FOR CAMO[®] DRIVE[™]

National Nail Corp. ("NNC") warrants to the original purchaser ("Buyer") for a period of one year from delivery of the goods to the Buyer that all goods manufactured solely by NNC ("Products") will be free from substantial defects in material or workmanship under normal and intended use and service. The Products shall not be defective to the extent that they are damaged due to the method or length of storage, negligence, misuse, or alteration by Buyer. This Limited Warranty sets forth Buyer's sole and exclusive remedies for any defect in the Products. Buyer acknowledges that NNC may provide additional goods with the Products that are not manufactured by NNC, including, without limitation, the Driver Drill. This Limited Warranty does not apply to such goods and Buyer's sole recourse for a defect in such goods will be the original manufacturer of such goods.

This Warranty does not cover normal wear and tear or any Products that were: (1) purchased other than from an authorized NNC dealer, retailer or distributor; (2) modified or altered by anyone other than NNC; (3) used with any fasteners or accessories other than fasteners and accessories approved by NNC; (4) improperly serviced; or (5) subject to negligence, excessive uses, or any use not in accordance with the printed materials provided with the Products, all as determined by NNC in its sole discretion.

If there is a defect in any Products constituting a breach of this warranty, NNC will at its option either repair or replace such Product. NNC will not pay for any of Buyer's shipping or labor costs or charges for correcting defects or making additions nor will NNC accept any returned Products unless the correction or return is authorized in advance by NNC in writing. NNC shall furnish to Buyer instructions for the disposition of the defective Products. NNC shall have the option of requiring the return of the defective Products and proof that the Products were not used or altered or subject to misuse or abuse to establish the claim. The acceptance of any Products returned to NNC shall not be deemed an admission that the Products are defective or in breach of this warranty, and if NNC determines that the Products are not defective they may be returned to Buyer at Buyer's expense.

The rights and obligation under this Limited Warranty may not be assigned or delegated to a third party by you without the prior written permission of NNC. The Limited Warranty provided to you will be void if you have not paid in full for all the Products or if you are past due on any amount due to NNC. Neither you nor any other person may modify or expand the warranty provided herein, waive any of the limitations, or make any different or additional warranties with respect to the Products. Any statements to the contrary are hereby rendered null and void unless expressly agreed to in writing by an authorized officer of NNC.

EXCEPT AS STATED ABOVE, NNC DOES NOT MAKE ANY WARRANTY AS TO THE PRODUCTS AND, IN PARTICULAR, DOES NOT MAKE ANY WARRANTY OF MERCHANT-ABILITY OR FITNESS FOR ANY PARTICULAR PURPOSE, AND YOU ARE SOLELY RESPONSIBLE FOR DETERMINING THE PROPER APPLICATION AND USE OF THE PRODUCTS.

NNC SHALL NOT HAVE ANY TORT LIABILITY TO YOU OR ANY OTHER PERSON WITH RESPECT TO ANY OF THE PRODUCTS AND SHALL NOT BE LIABLE FOR CONSEQUENTIAL, INCIDENTAL, SPECIAL, EXEMPLARY, INDIRECT OR PUNITIVE DAMAGES ARISING FROM ANY PRODUCT DEFECT, DELAY, NONDELIVERY, RECALL, OR OTHER BREACH.

